

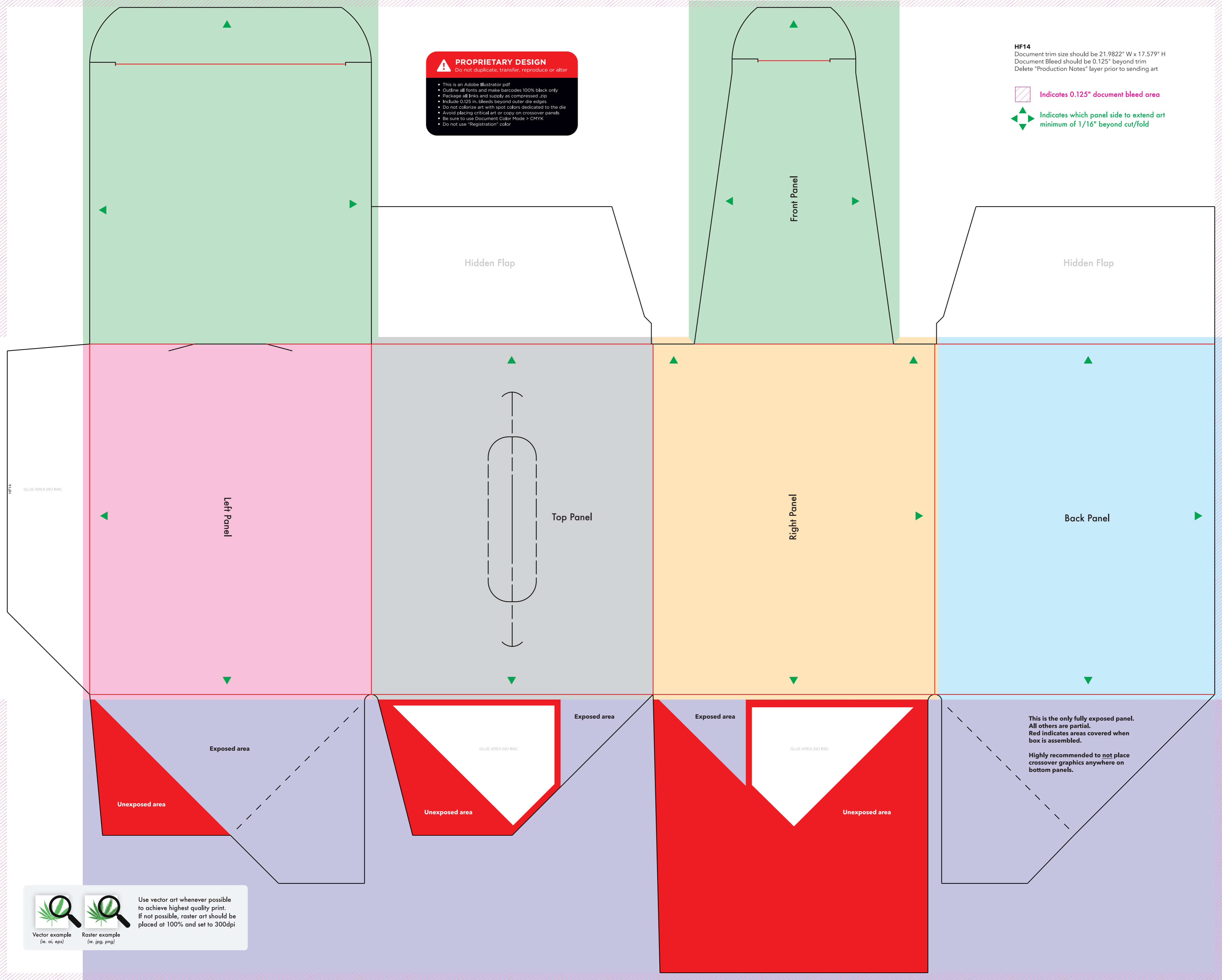


PROPRIETARY DESIGN
Do not duplicate, transfer, reproduce or alter

- This is an Adobe Illustrator pdf
- Outline all fonts and make barcodes 100% black only
- Package all links and supply as compressed .zip
- Include 0.125 in. bleeds beyond outer die edges
- Do not colorize art with spot colors dedicated to the die
- Avoid placing critical art or copy on crossover panels
- Be sure to use Document Color Mode > CMYK
- Do not use "Registration" color

HF14
Document trim size should be 21.9822" W x 17.579" H
Document Bleed should be 0.125" beyond trim
Delete "Production Notes" layer prior to sending art

-  Indicates 0.125" document bleed area
-  Indicates which panel side to extend art minimum of 1/16" beyond cut/fold



HF14
GLUE AREA (NO INK)

Left Panel

Top Panel

Right Panel

Back Panel

Front Panel

Hidden Flap

Hidden Flap

Exposed area

Unexposed area

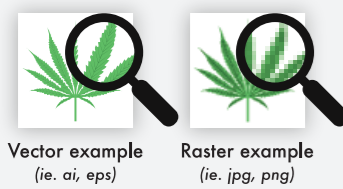
Exposed area

Unexposed area

Exposed area

Unexposed area

This is the only fully exposed panel. All others are partial. Red indicates areas covered when box is assembled. Highly recommended to not place crossover graphics anywhere on bottom panels.



Use vector art whenever possible to achieve highest quality print. If not possible, raster art should be placed at 100% and set to 300dpi

Vector example (ie. ai, eps) Raster example (ie. jpg, png)